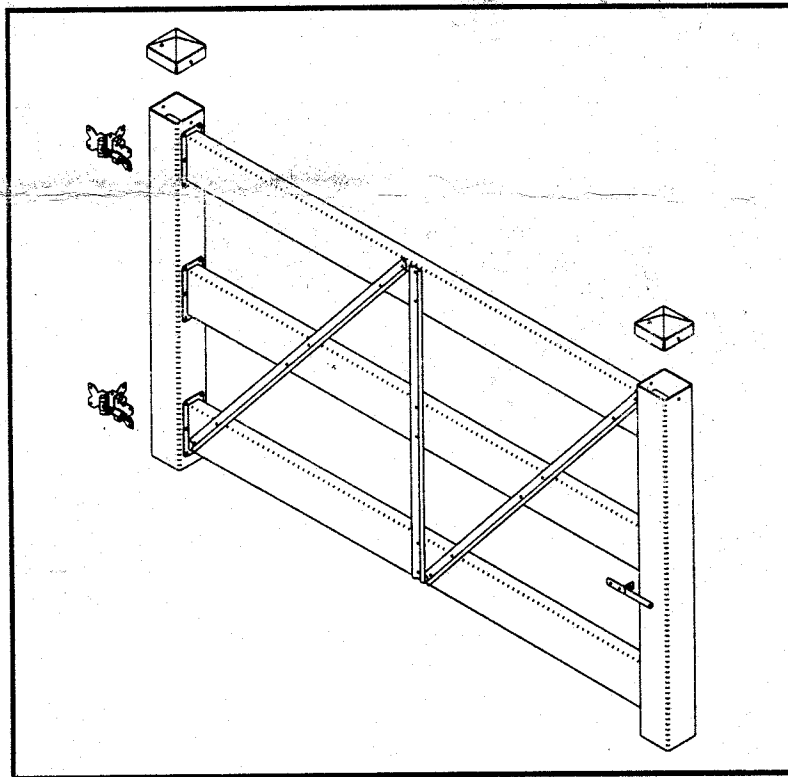


3-RAIL SOCKET GATE ASSEMBLY/INSTALLATION



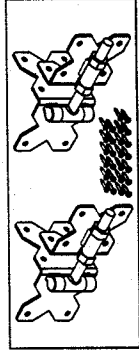
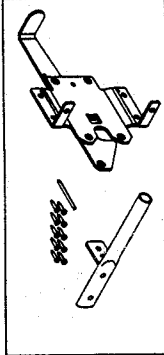
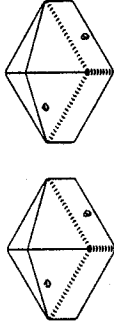
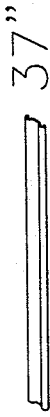
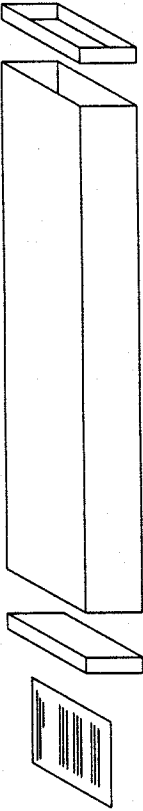
This product, properly installed, will provide years of durable, low maintenance service. This manual contains installation methods that have proven successful and is not intended to cover every situation an installer may encounter. Since each installation is unique as to performance requirements, soil conditions, climatic conditions and other factors, the installation method used is the sole responsibility of the installer. The manufacturer disclaims any liability or responsibility for installation of this product.

The manufacturer does not recommend or approve this product for end use applications. Your local Code Authority should be consulted as to its safety and applicability for intended usage.

3-RAIL SOCKET GATE KIT PART LIST

PART #25-9SG3-01

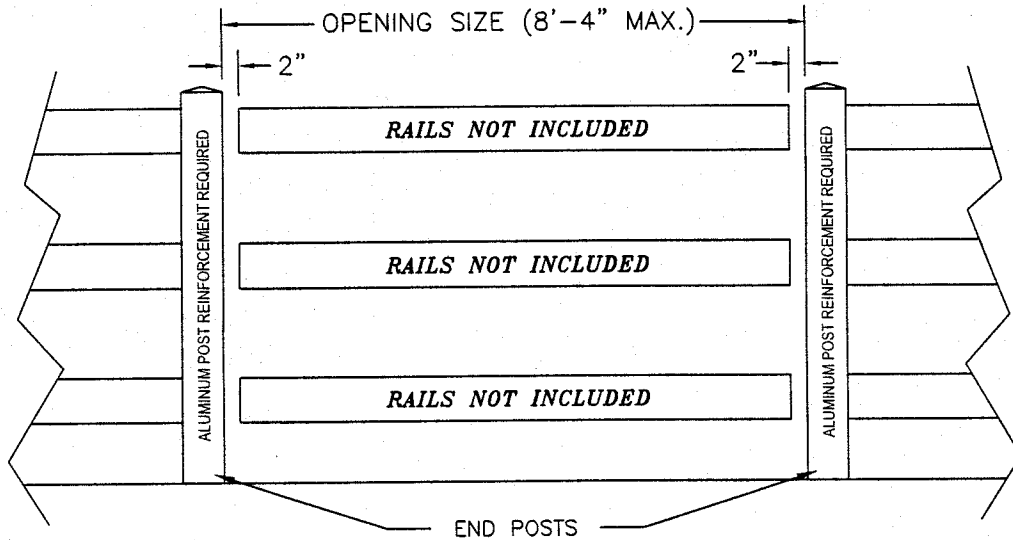
No.	Description	Qty.
1	PACKAGING & INSTRUCTIONS	1
2	SOCKET POST (4"x4"x42.5")	2
3	SHORT BRACE (23-AG37-01)	1
4	LONG BRACE (23-AG52-01)	2
5	POST CAP (23-9046-01)	2
6	TEK SCREWS (23-H818-01)	4
7	LATCH KIT (23-HLA6-70)	1
8	HINGE KIT (23-HHBN-70)	1



Post & Rail Socket Gate Assembly Instructions

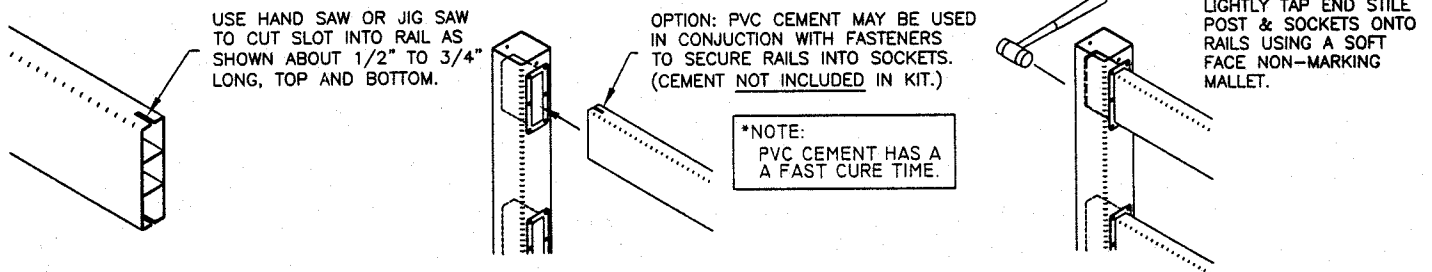
Step 1.

CUT 1 1/2"x 5 1/2" RAILS TO A LENGTH 4" SHORTER THAN THE GATE OPENING SIZE.
(GATE OPENING SIZE IS THE DISTANCE BETWEEN GATE POSTS.)



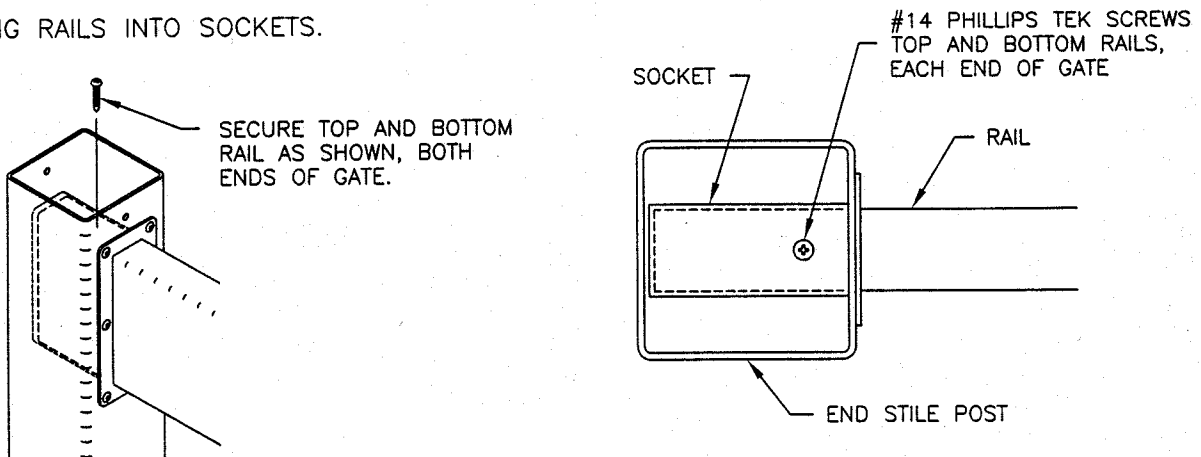
Step 2.

INSERT RAILS INTO SOCKETS AS SHOWN (MAKE SURE CAP HOLES ARE IN THE UP POSITION).



Step 3.

SECURING RAILS INTO SOCKETS.



Post & Rail Socket Gate Assembly Instructions

Step 4.

ATTACH HINGES TO GATE AS SHOWN. PROPERLY POSITION THE GATE IN THE OPENING AND ATTACH HINGES TO THE HINGE POST. (GATE MAY BE PLACED ON BLOCKS TO ASSIST) USE DRILL BIT ENCLOSED IN HARDWARE KIT FOR PRE-DRILLING. ATTACH HINGES AND BRACING TO GATE WITH SUPPLIED FASTENERS.

ADJUST AND TIGHTEN NUTS ON HINGES TO LEVEL THE GATE THEN ATTACH THE LATCH TO THE LATCH POST. ALUMINUM POST REINFORCEMENT REQUIRED.

LINE UP THE STRIKER WITH THE LATCH AND ATTACH STRIKER TO GATE.

